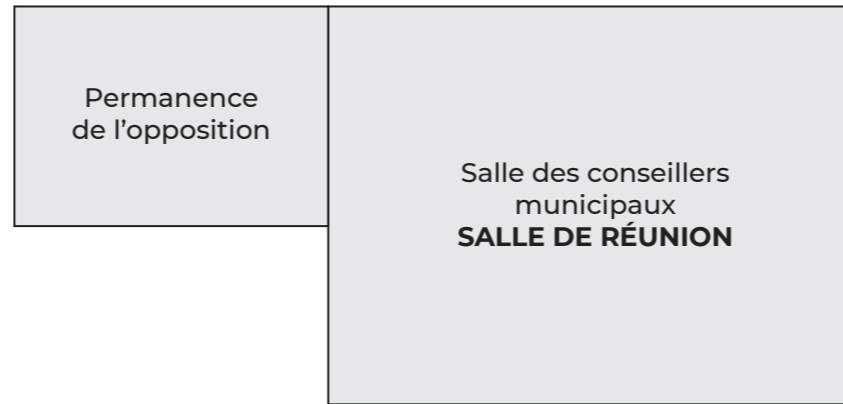
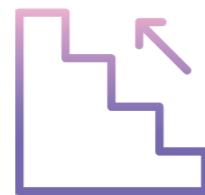


**PLAN DES BUREAUX  
DE LA MAIRIE**  
*MAJ le 04/02/2025*

**REZ-DE-CHAUSSÉE**



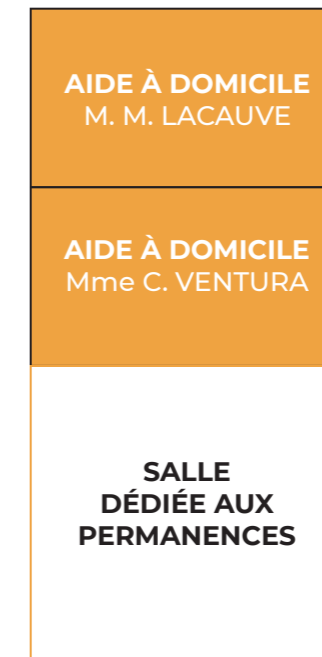
**Pôle Éducation / Culture**



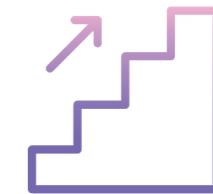
Vers 1<sup>er</sup> étage  
Pôle Cabinet & Direction



**Pôle CCAS**



**CONSEILLERS**  
Mme J. CLÉMENT-LEFRANÇOIS  
Mme A. CHAPELIER  
Mme P. DEUSTCH  
M. J-P MÉNARD-TOMBETTE



Vers 1<sup>er</sup> étage  
Pôle Événementiel et Urbanisme

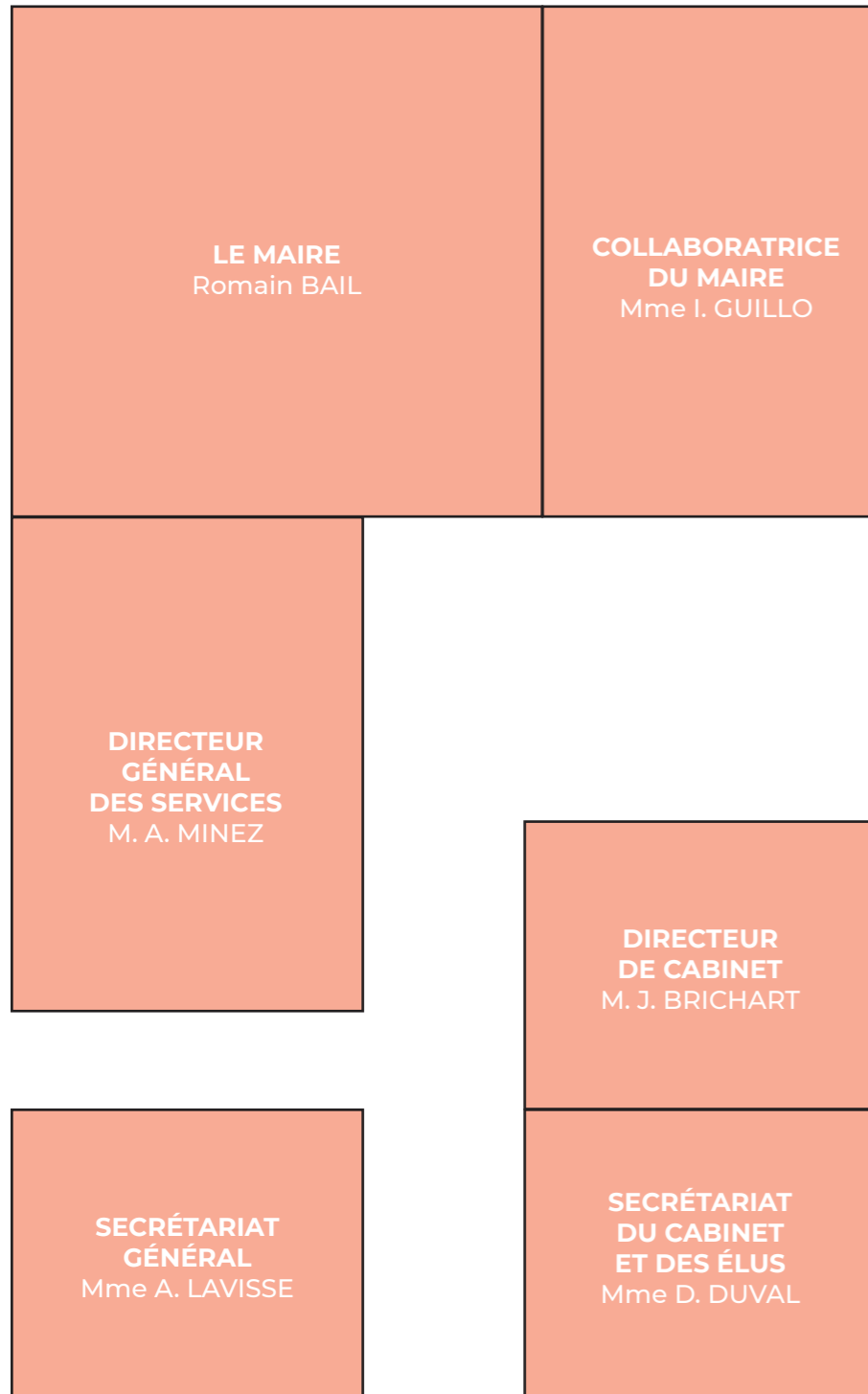
**Pôle population**



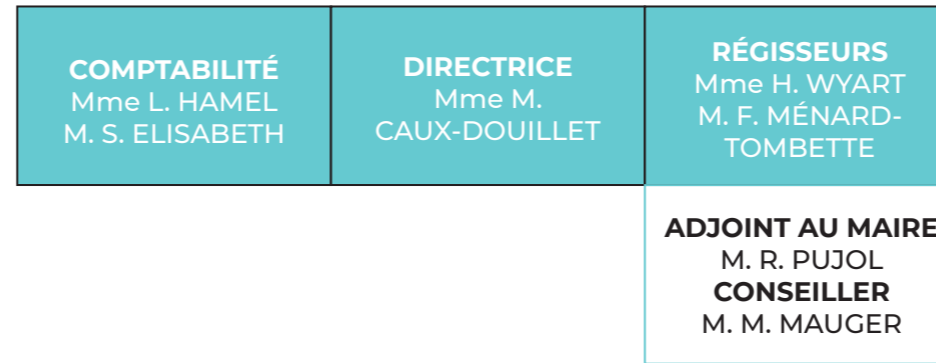
**Pôle Services Techniques**

# 1<sup>er</sup> ÉTAGE

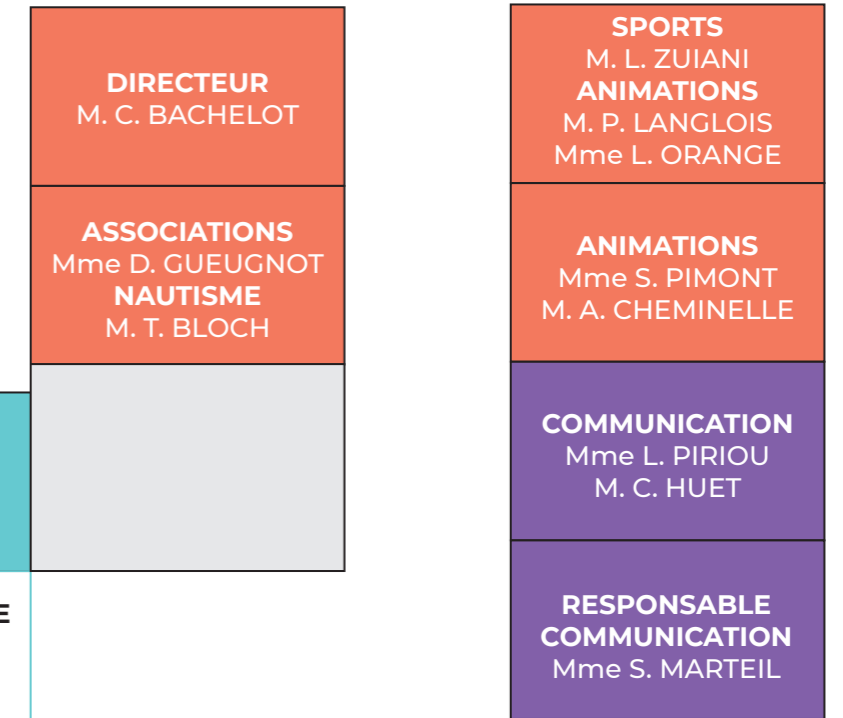
## Pôle Cabinet et Direction



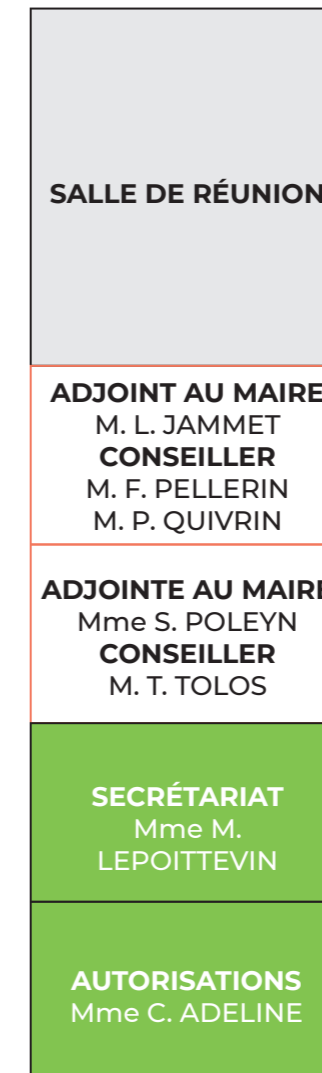
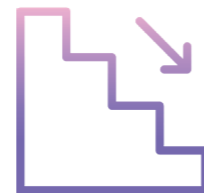
## Pôle Finances / Commerces et développement économique



## Pôle Événementiel, associations, sports



**Pôle Communication**



**Pôle Urbanisme**



**Pôle Ressources Humaines**