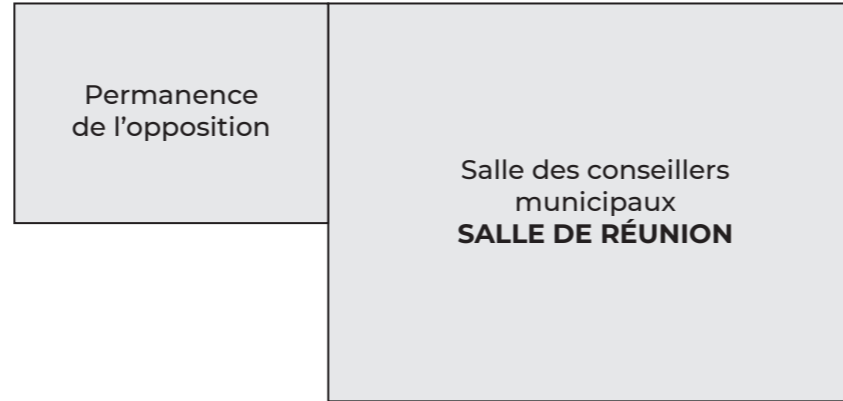
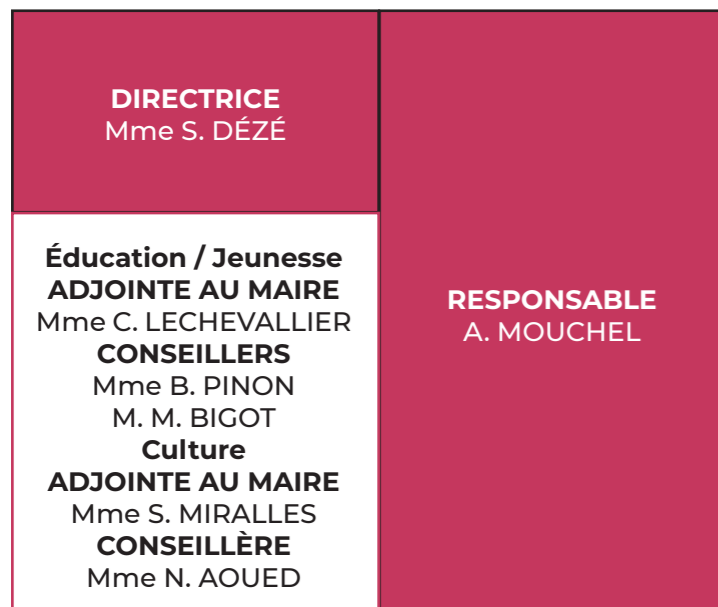


**PLAN DES BUREAUX
DE LA MAIRIE**
MAJ le 20/12/2024

REZ-DE-CHAUSSÉE



Pôle Éducation / Culture

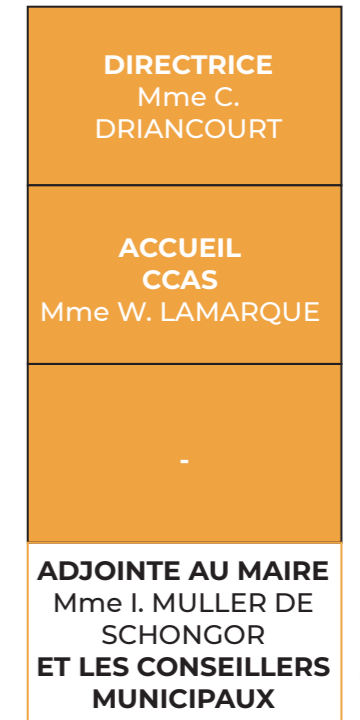


Vers 1^{er} étage
Pôle Cabinet
& Direction

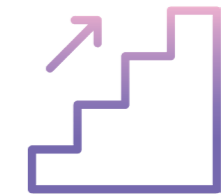


Pôle Services Techniques

Pôle CCAS

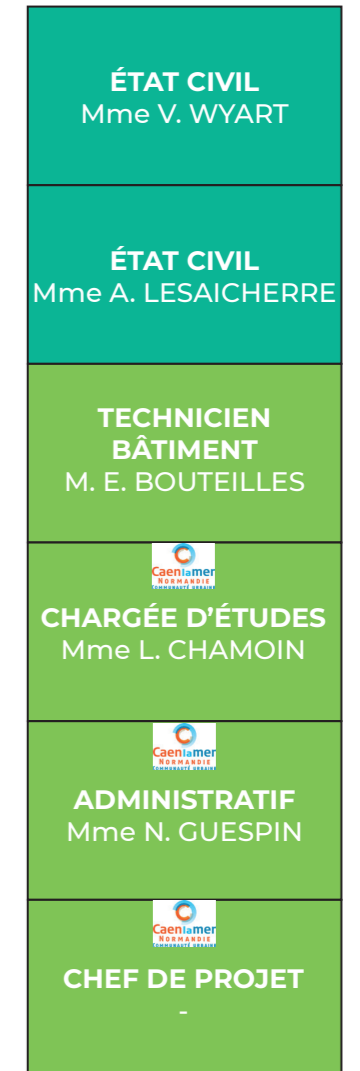


CONSEILLERS
Mme J. CLÉMENT-LEFRANÇOIS
Mme A. CHAPELIER
Mme P. DEUSTCH
M. J-P MÉNARD-TOMBETTE



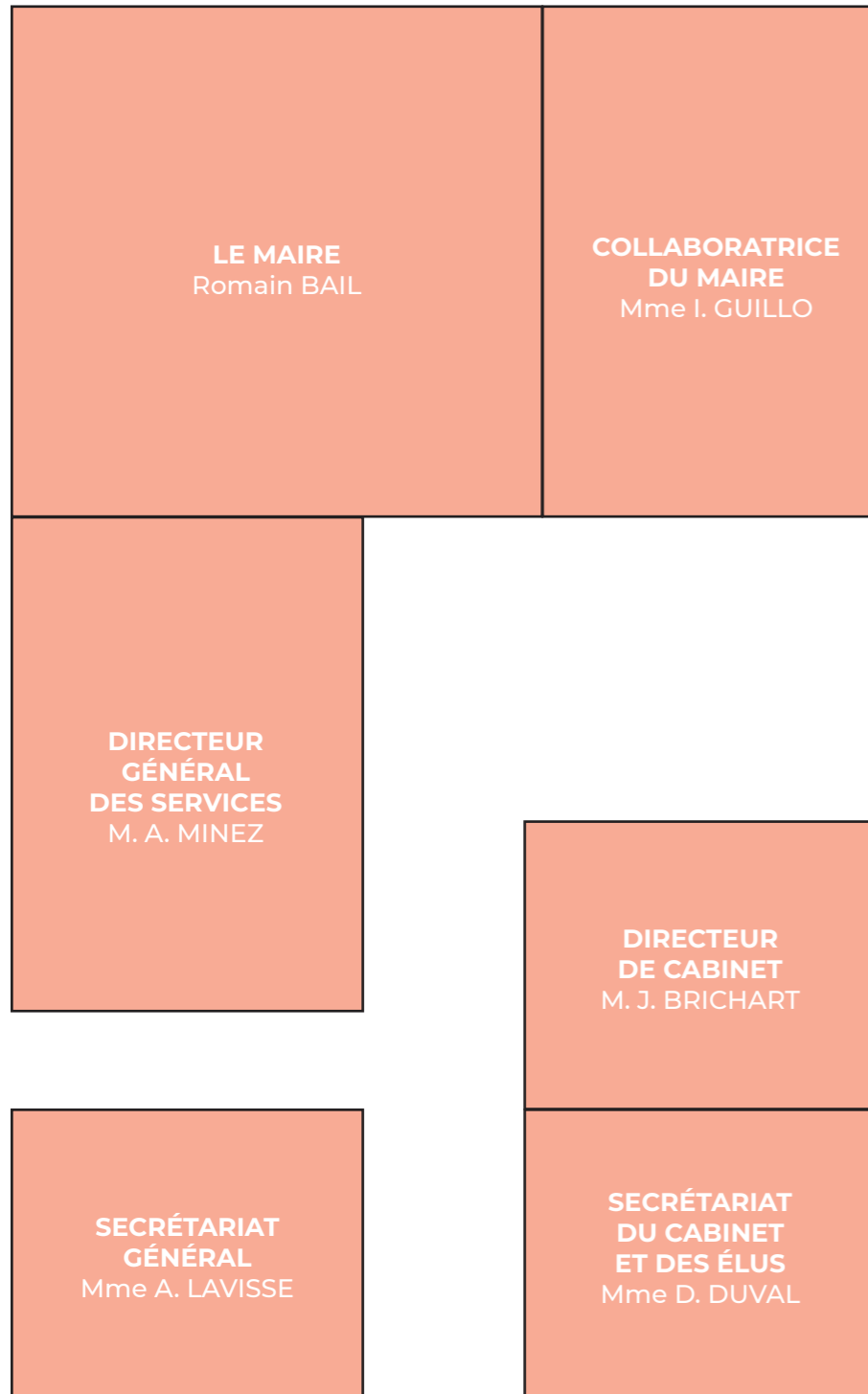
Vers 1^{er} étage
Pôle Événementiel
et Urbanisme

Pôle population

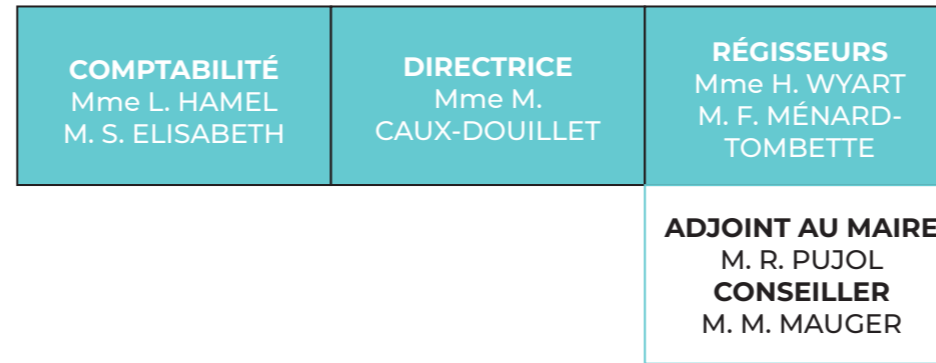


1^{er} ÉTAGE

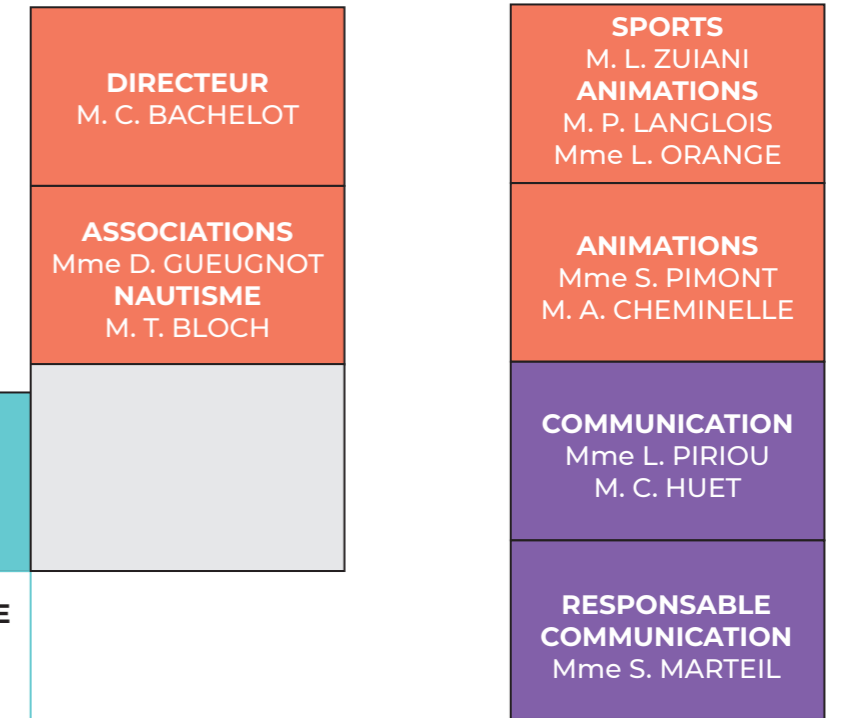
Pôle Cabinet et Direction



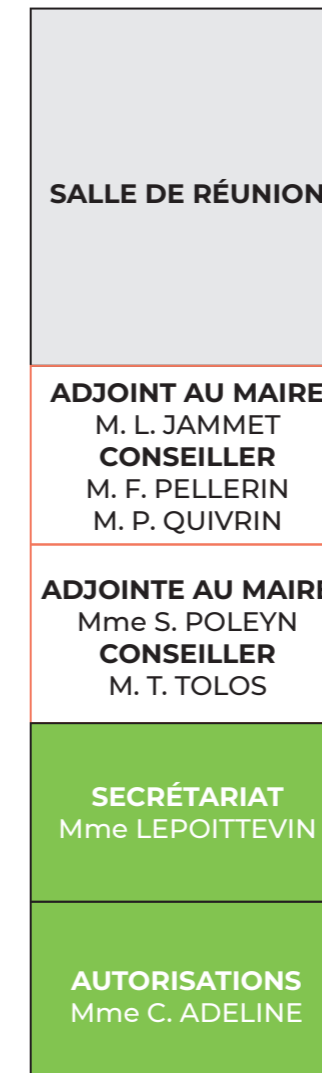
Pôle Finances / Commerces et développement économique



Pôle Événementiel, associations, sports



Pôle Communication



Pôle Urbanisme



Pôle Ressources Humaines